

How to change memory storage to sd card

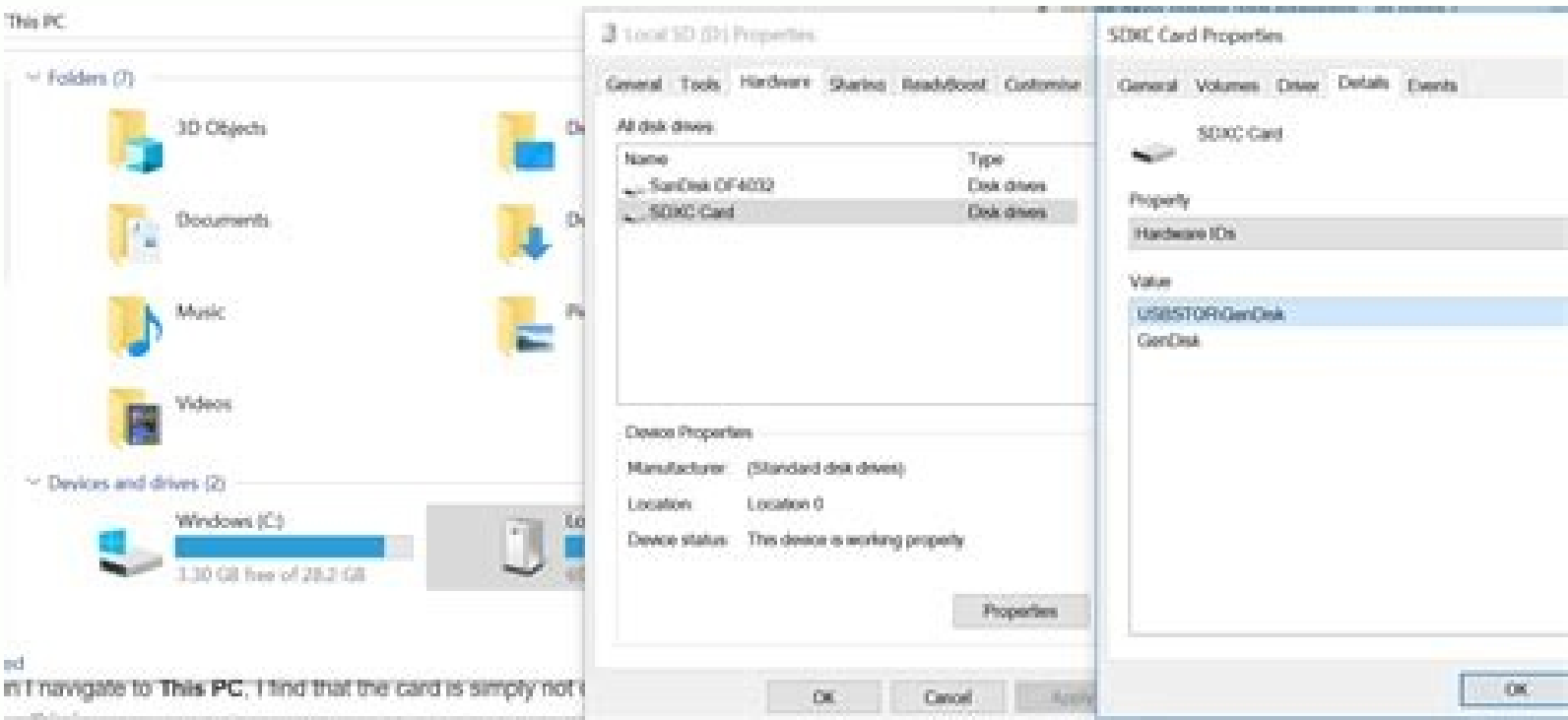
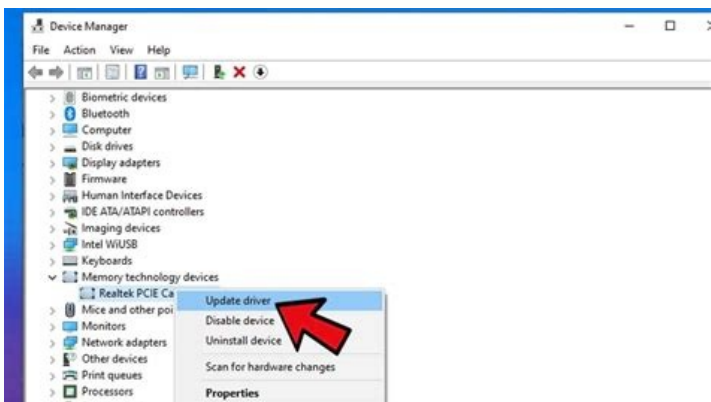
☐

I'm not robot

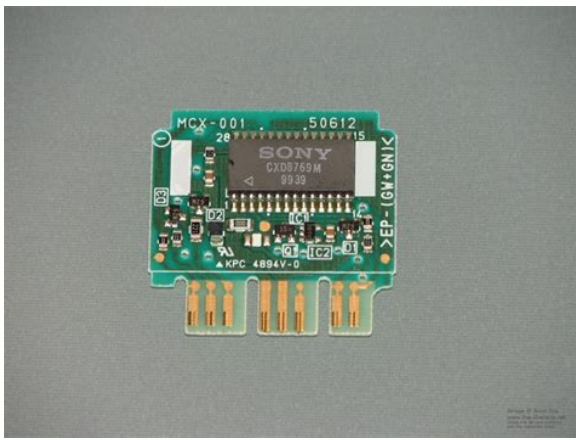
  
reCAPTCHA

Continue





in I navigate to **This PC**, I find that the card is simply not



How to change whatsapp storage from phone memory to sd card. How to change memory to sd card. How to change whatsapp storage from sd card to internal memory. How to change storage from internal memory to sd card. How to change storage to sd card. How to change storage from phone memory to sd card. How to change default storage from internal memory to sd card. How to change storage location from sd card to phone memory.

How to move from the internal memory to the SD card? \*\*\* Starting from Android 4.4 (Kitkat), Google prevented the apps from writing on the SD card except in a very specific sandbox position. There are some things to keep in mind regarding this limitation imposed by Google. If you use an Android 4.4 (Kitkat) device with an SD card, consult this driving page. \*\*\*\* With Android 6.0 (Marshmallow), Google has changed access to the SD card again. For more information, see this guide page if you use an Android 6.0 device (Marshmallow) with an SD card. \*\*\* To move from the internal memory to the external memory card on a double memory device such as Samsung Galaxy S4, touch the icon in the upper left corner to view the menu. You can also touch and scroll to the right to view the menu. So it's up to settings. So it's up to "Store". This switch will tell the desktop app which volume to show for synchronization. Select a storage position, then it's "edited" to confirm. The database of the library will be eliminated. Wait a few minutes for restoring. It is recommended to use a single volume to store multimedia content. If you choose a memory card, do not archive multimedia files in the internal memory since this could cause errors during the synchronization/import process. Yooodley is supported by the reader. When you buy links from our site, we could earn affiliation commissions. Samsung tablets like the Galaxy Tab S7+ LTE are equipped with 256 GB of internal memory, which is sufficient for most people, but the oldest models such as the Samsung Galaxy Tab E and series are available only in the range from 8 to 32 Gb. Memory is not enough for some people, so they prefer to store data on SD cards. The latest Samsung tablets support SD cards up to 1 TB, so if you want to change the memory in an SD card for installed apps and file storage, you can easily do it by following the following steps. How to change the default storage on the SD note Note: there are many models of Samsung tablets with different versions of Android. So the actions of some models could be slightly different. And if your model does not allow you to change the default memory, you can use Android apps like Link2SD, but you must disable your Samsung tablet, which could be risky; We also mentioned how to manually transfer the data and install apps from the internal memory to the SD card. Step 1: Å Open the tablet settings. Find the settings icon in the initial screenTouch the panel or program drawer and on it. You can also call the search strip settings if you cannot find them. Step 2: Go for memory terms. As soon as you have opened the settings, you must open the memory inserts, change the standard location of the storage and change them in the SD card from "and internal memory". Now your current storage position is displayed as a SD card. In most Samsung tablets, the Samsung tablet can change the location of the installed app memory. If you have a model that prevents the standard storage position, you can use your applications as SD cards and save the image, video and other applications. You must find the symbol for program drawer settings. Step 2: Open the program. Search for the setting menu and tap. If you use Android 10 or more, this is just an open application manager. If you see the application manager and the standard apps, you can see the list of all installed programs. You have the latest version of Android, step 2 is overlooked.) Step 3: Go to the memory. Tap the program with which you want to switch to the SD card and the memory by touching the memory area. The area he occupies. Step 4: Replace the location. If the storage space is displayed as a "internal memory" or as an internal conventional memory, tap the SD card and select the SD card. If you select an SD card when another window is opened, tap the transport button and your program has been transferred. Note: All programs cannot be transferred to the SD card, in particular to the programs you have created. So if you do not look at the "Change" button, this means that the program cannot be transferred to SD. If you have data such as game files, you can easily transfer it to your SD card by taking some simple steps. Step 1: Open the file manager. Samsung tablets and smartphones are a file manager with a yellow symbol. You can find it in the app drawer or in a call with a search tape. Step 2: Touch the inner memory. Step 3: Find files and folders. By touching the inner area of the memory, all folders and files have. Call the folder or files. If youNote where your files are, you can call using the search option and long press on the file and touch the details to find their location. Step 4: Select files. After learning where your files are, you can save one and select the files you want to transport. When you're done select all files, "Copy" or stone. Step 5: Move files to SD card. After touching "Move", select the SD card memory, select a folder or create a new folder, and finally click "stone here" and all files are moved to the SD card. Transfer data to SD card from internal memory (via PC or laptop) It is also possible to transfer tablet data using PC or laptop by following these steps: Step 1: Connect Samsung tablet to PC. You can use a USB charging cable to connect your tablet to a PC. Step 2: Access to the storage area. If your tablet has a screen lock, make sure the screen lock is open. After connecting the USB cable to the PC, you can display the USB storage context window or check notifications, if you don't, then click notifications. Now call USB Archives and click to allow access to the storage area. Step 3: Open the device on PC. Open my "computer" or "this computer" and name the tablet. If you don't see the device name, bring up "removable disk" and click on it. Transfer 4: Select the files you want to transfer. As soon as the device is opened to the computer, you will see the internal memory and the SD card block. Click on integrated storage and select the files you want to move. You can also press and hold the control button and select multiple files using the mouse. Finally, on the right - click on the selected files and click "Size". Step 5: Move files to SD card. After selecting the files, return and open the SD card memory. Now select the desired folder and click the mouse button and glue. All files are moved to the selected folder. How to format an SD card Open the tablet settings and select the memory. Click the SD card form and follow the instructions on the screen. Open the app drawer settings and click Device Maintenance. Now press memory and select SD card. You will now have options to eliminate documents, images, videos, sound, and the application. You can open them and select all files and touch Delete. To add/remove an SD card, open the SD card tray using The Opulsion Pivot. Put the SD card into the slot and restart the SD card trayRead More Sophie Green Å Å Updated 2023-02-15 / Update Å Å WhatsApp recommendations, low-quality smartphones do not offer more media storage in the market. The problem occurs when the memory is filled. The phone sometimes slows down and slows down. Especially if you use another application that requires data storage on WhatsApp or your phone, you need a lot of spaces. You may then need an additional storage device, such as SD card to store your data. In this guide, we discussed various ways of transporting WhatsApp to the SD card. "How to move to WhatsApp SD card?" if you are wondering. So the answer is quite simple: "No". Currently, it is not possible to move WhatsApp to the memory card or SD card. However, you have the option to transfer WhatsApp media files to the memory card. Follow this blog to find out how to carry WhatsApp Media to the SD card. If you are looking for an answer to how to carry WhatsApp to the Samsung J2/J3/J5/J7 SD card, this section is for you. You can use Windows Explorer or Tenorshare icarefone to transfer media files to the SD card. Method 1: Icarefone for SD Karta Stone (Icarefone for Whatsapp Transfer) Tenorshare Icarefone Transfer (Icarefone for Whatsapp Transfer) is an easy -to -use tool that helps you to transfer WhatsApp to the SD card with just a few clicks. How you can use the Icarefone Transfer (WhatsApp transfer) to export WhatsApp data is described below. Install and start the tool, connect your device and select "WhatsApp"> "Backup". Now select "Create New Backup" and click "Continue" to continue. Then, you will need to enter your phone number to verify your WhatsApp account. Then the backup process will be completed. Then click "View backup" and all files will be displayed. Select the files you want to export and click "Transfer to Computer". Finally, the exported file will be saved to your selection position. After releasing WhatsApp data on PC, you can connect the SD card to the PC and move the WhatsApp environment to the SD card. Method 2: Move WhatsApp to the SD card using Windows Explorer to SD Card, if you are looking for a free method to save the WhatsApp environment to the SD card, Windows is a recommended tool. You can save WhatsApp Media SD card with simple steps. All you have to do is connect your device to your computer and start transferring your important data. Connect your phone to your computer using a USB cable. Make sureThe computer recognizes your phone. Open Windows Explorer or My Computer and select your device. Using Windows Explorer, open the internal storage area of your device. Open the WhatsApp folder and go to the media folder. Cut or copy the folder, return, open the external storage, and paste the copied file. In most cases, you need extra storage space to store important data. In this section, we will teach whatsapp to back up the SD card. Users cannot carry WhatsApp to the SD card using ES File Explorer using local WhatsApp settings. However, you can use File Explorer to move WhatsApp media files to the SD card. Here is how you can do this. Download and install ES File Explorer on your Android device via Play Store. Run when you want to copy the data. Start the ES File Explorer on your device and check the storage area of your device/SD card. Then go to Internal Storage> WhatsApp. Select all media files and tap the copy button or other> stone. Go to the SD card and choose where you want to copy the data. To set WhatsApp storage on the SD card, follow these steps: Settings> Storage> Go to the internal storage section. Tap Applications and select applications you want to transfer. Now tap Storage> Change> SD Card used. If the Circuit of WhatsApp to the SD card is outside the circuit, you must first turn off the device. Most developers do not enable this feature to provide protection against collapse or e-mail fraud. literature. Since Widgets cannot be used depending on the application version, another reason may be Widget support. You can restart your phone to fix this. The SD card stone grows when the application is synchronized in the background. If the application is installed in the background, some functions may disable. Unfortunately, this option is not available on android devices. To access this feature, your device must be rooted. However, this option can still be used on old Android devices. Q1: How is WhatsApp set as default storage on the SD card? Upload and open the application to your phone. Then go to the settings and enable Setting the SD CARD WAY. Now replace the "Internal SD Card Way" to an external SD card. Once you've changed the path of the external SD card, select Enable the Enable for Applications. However, you can also use free applications for this. Question 2: How can I set the SD card as Samsung default storage? Go to the "Settings" section of the device andChoose "Memory". Now select "SD card", then press the menu button (three points). Now select "Format" then "Delete & Format". Question 3: How can I change WhatsApp for Redmi on the SD card? Access the parameters and then the expanded parameters or the system and the device. Press the memory option now. Then click on the memory settings and change everything on the external SD card. Less storage space can often be questioned about the transfer or copy of data to another place, for example B. An SD card. Then ask yourself how you can keep WhatsApp Media on the SD card. If so, this guide is for you. Here, we discussed various options to smooth WhatsApp to the SD à Écart. You can use paid tools such as Icarefone transfer (Icarefone for Whatsapp) to transmit multimedia files. Translate WhatsApp, secure and restore WhatsApp messages on the way, move WhatsApp flexibly from iPhone 14 to Android; Move WhatsApp flexibly from the iPhone to the iPhone 14; Secure the iPhone WhatsApp for free and simply on PC / Mac; Restore WhatsApp on iPhone, iPad, Android; Android;

